

CONGRATULATIONS ON THE PURCHASE OF YOUR DES SOL PRODUCT.

Part Number : DSJRB – G4
Part Description : Des Sol Rear Bumper (2018 - Current)
Vehicle : Suzuki Jimny 2018 – Current

WARNING

NOTE THE FOLLOWING:

- THIS PRODUCT MUST BE INSTALLED EXACTLY AS PER THE FITTING INSTRUCTIONS BELOW AND ONLY THE HARDWARE SUPPLIED WITH THIS PACK IS TO BE USED
- IN THE EVENT OF DAMAGE TO THE REAR BUMPER OR MOUNTING COMPONENTS, CONTACT YOUR NEAREST DES SOL SUPPLIER – REPAIRS OR MODIFICATIONS MUST NOT BE ATTEMPTED ON THE BREATHER KIT
- THIS PRODUCT AND MOUNTING COMPONENTS MUST NOT BE MODIFIED IN ANY WAY
- DO NOT REMOVE LABLES FROM THIS PRODUCT




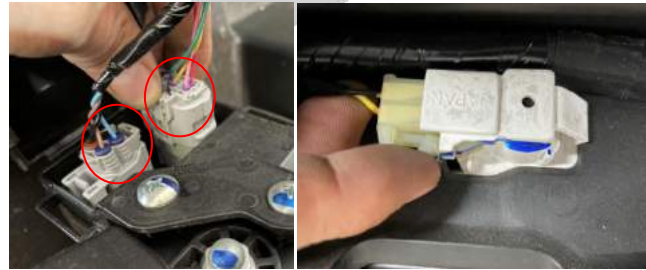

Tools required for installation:

- Screw drivers
 - Small Flat
 - Medium Philips
- Ratchet & Sockets:
 - 10mm socket
 - 19mm socket
 - Torque wrench
- Allan Keys
 - No.4 Allan Key

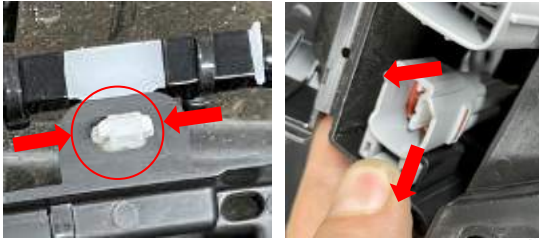
ITEMS CONTAINED IN THIS KIT

Main Body	<ul style="list-style-type: none"> 1 x Rear bumper Main Body 12 x M6x12 Button head Cap Screws 4 x M6 Nylocks 14 x M6 Flat Washers 4 x M6 Fender Washer 2 x Number Plate Mounts
Tow Bar	<ul style="list-style-type: none"> 1 x Tow Bar 2 x 3.25T Bow Shackle 2 x Double M12x 35 Bolt Retainer 14 x M12 Washer 14 x M12 Nylock 10 x M12 x 35 8.8 grade
Mounting Brackets	<ul style="list-style-type: none"> 1 x LHS Mounting Bracket 1 x RHS Mounting Bracket 2 x Double M12 Nut Retainer 4 x Single M12 Nut Retainer 8 x M12 Washer 8 x M12 Nylock 8 x M12 x 30 8.8 grade

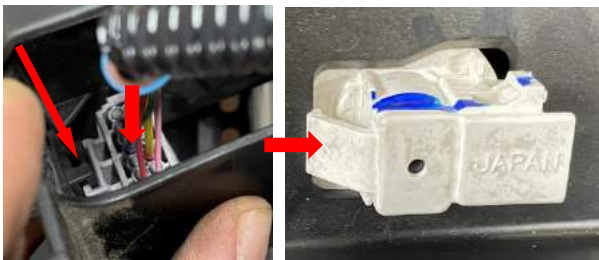
REAR JIMNY BUMPER REMOVAL

	<ol style="list-style-type: none"> 1. Remove the 4 x M6 bolts 2. Remove the 2 x Body clips with a body clip removal tool, or a small flat screw driver
	<ol style="list-style-type: none"> 3. Remove the 2 x M6 Self Tappers bolts holding the bumper to the wheel well on both sides 4. Remove the M6 bolts holding the under part of the bumper to the chassis
	<ol style="list-style-type: none"> 5. Pull the bumper towards the rear of the vehicle - the two ends are clipped in. NOTE: The light cable is on the LHS and is short. 6. Unclip the Junction box lid by pressing the clip in towards the box – there is a clip either side of the box
	<ol style="list-style-type: none"> 7. Push the clip inwards to release the Male connector from the Female clip for both connections and completely remove the bumper 8. Remove the two Number plate light clips
	<ol style="list-style-type: none"> 9. Undo the 11 Philips self tapping screws and the 6 (3per side) M6 nuts that retain the lights 10. Undo the light clips by pushing down and the tab to release the clip and pull out 11. Remove both lights by pressing the clips in towards the centre of the light and drop the light way from the bumper.

REAR JIMNY BUMPER REMOVAL/FITMENT



12. Undo the 7 Clips and 1 cable tie holding the wiring loom in place
13. Remove the female clips from the black housing by pulling the tab away from the plug and pushing the plug up and out of the housing



14. Use a pin to release the female clip from the black housing, push the clip down, away from the black housing .
15. Press the number plate light clip in and remove the light.



16. Insert the number plate lights into the mounting plates.
17. Plug the loom into the lights.
18. Run the loom under the light mounts and fasten the mounts to the bumper.



19. Feed each end of the loom through the hole provided on the bumper main mounting plate – NOTE: The two plug ends must be on the LHS of the bumper once on the vehicle
20. Plug the lights into the loom

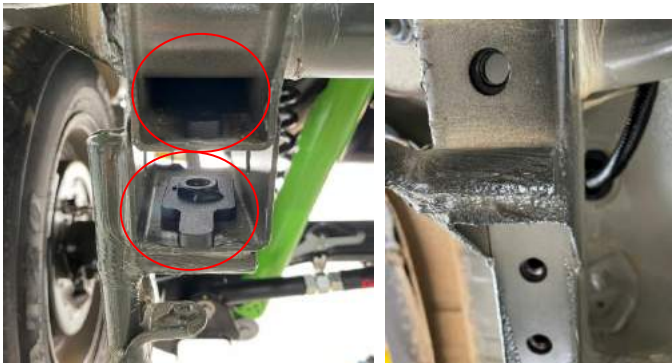


21. Insert the light and the M6 fender washers with the Nylock nuts
22. Line up the gap between the light and the bumper as evenly as possible and tighten up the M6 Nylocks
23. Fit the Light guards and fasten them with the M6x12 button head cap screw, M6 washer and M6 spring washer

REAR JIMNY BUMPER REMOVAL/FITMENT



24. Undo the body clip attaching these side plastic panels
25. Lift the panel up and away to remove the white clip – these should come out together.
- 26.



27. Insert the single nut retainer at the bottom of the chassis rail and the double nut retainer at the top
28. Line up the nut retainers with the holes in the chassis



29. Insert the main mounting bracket and insert the bolts till finger tight
30. Start with the single nut retainer and then the furthers bolt on the double nut retainer
31. Add the vertical single nut retainer and bolt
32. Do this for both sides – Flat ends of the brackets must face each other.

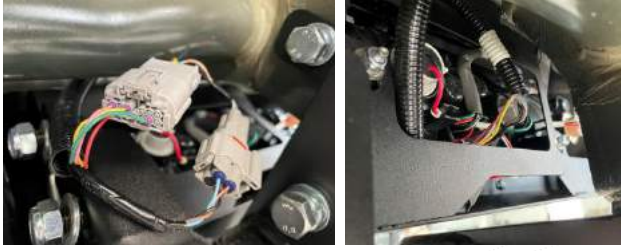


33. Slide the tow bar in between the mounting brackets and insert 4 M12x35 bolts per side with M12 spring washers and M12 flat washers – finger tight.



34. Slide the bumper in place – Note that the bumper mounting points slide on the outside of the tow bar.
35. Insert the M12x30 Bolt retainer plate to hold the bumper to the tow bar – this plate must be mounted from the outside and the Washer and Nylock to be inserted from the inside for access.

REAR JIMNY BUMPER FITMENT



36. Clip the Rear light wire loom to the put loom from the vehicle
37. Tuck the wires behind the light mounting bracket



38. Pull the mounting bracket as far to the rear of the vehicle before tightening up the bolts
39. Ensure the tow bar is pulled as far back to the rear of the vehicle as possible and lift it upwards then tighten the bolts.
40. Repeat this for the bumper mounting plates and the bumpers lines will line up with the vehicle
41. Torque all the M12 Bolts to 88nm

