

CONGRATULATIONS ON THE PURCHASE OF YOUR DES SOL PRODUCT.

Part Number : DSJSKL-G4
Part Description : Des Sol Snorkel GEN4 (2018 - Current)
Vehicle : Suzuki Jimny 2018 – Current

WARNING

NOTE THE FOLLOWING:

- THIS PRODUCT MUST BE INSTALLED EXACTLY AS PER THE FITTING INSTRUCTIONS BELOW AND ONLY THE HARDWARE SUPPLIED WITH THIS PACK IS TO BE USED
- IN THE EVENT OF DAMAGE TO THE SNORKEL OR SUPPLIED COMPONENTS, CONTACT YOUR NEAREST DES SOL SUPPLIER – REPAIRS OR MODIFICATIONS MUST NOT BE ATTEMPTED ON THE SNORKEL
- THIS PRODUCT AND MOUNTING COMPONENTS MUST NOT BE MODIFIED IN ANY WAY
- DO NOT REMOVE LABELS FROM THIS PRODUCT

Tools required for installation:

1. Screw drivers
 - Medium Flat screw driver
 - Medium Philips screw driver
2. Ratchet & Sockets:
 - 8mm Socket and/or spanner
 - 10mm socket and/or spanner
 - 12mm socket and/or spanner
3. Spanners
 - 19mm Wheel spanner
4. Miscellaneous
 - Masking Tape
 - Rust inhibitor
 - Dremel (With a slitting disk)
 - Small file or de-burring tool
 - Hand drill
 - 5mm drill bit
 - Rivet gun

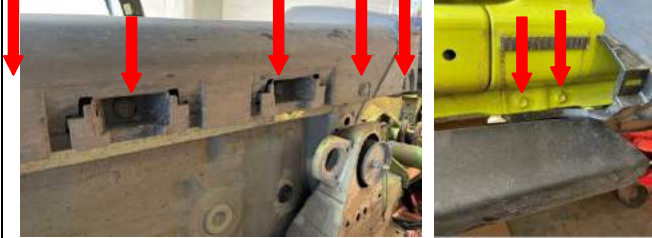



ITEMS CONTAINED IN THIS KIT

Main Body	<ul style="list-style-type: none"> 1 x Snorkel Main Body 1 x Blue Flexible Hose 1 x Hose Clamp
Main Body Mount	<ul style="list-style-type: none"> 1 x Snorkel Main Body Mount 1 x U-Bracket 1 x Single Bolt Retainer Plate 1 x Double Bolt Retainer Plate 3 x M6 Nylock Nuts 3 x M6 Washers
Vacuum Chamber Relocation	<ul style="list-style-type: none"> 1 x Vacuum Chamber Relocation Bracket 3 x M6 Nylock Nuts 3 x M6 Washers
T-Piece	<ul style="list-style-type: none"> 1 x T-Piece 1 x T-Piece Mount 1 x One-Way Valve 3 x Hose Clamps 2 x M6x10 Button Head Cap Screws 2 x M6 Spring Washers 2 x M6 Washers

JIMNY GEN4 SNORKEL FITMENT

	<ol style="list-style-type: none">1. Jack up the vehicle and use the 19mm wheel spanner to remove the front right wheel2. Remove the rubber windscreen wiper nut covers3. Undo the nuts with 12mm spanner and remove the windscreen wipers
	<ol style="list-style-type: none">4. Open the bonnet and use the 10mm spanner to undo the battery terminals and remove the battery5. Use the medium flat screw driver to unclip the 4 x black body clips. Insert between cut out and twist the screw driver to gently open the clip.
	<ol style="list-style-type: none">6. Disconnect the two window washer pipes7. Pull up gently on one side of the Cowl trim at a time and protect the Cowling trim from hitting the bonnet – These are hold on by one white body clip and a black catch clip
	<ol style="list-style-type: none">8. Remove the body clip and M6 bolt on the fender cover.9. Remove self-taping screw in door well10. Use a plastic wedge or taped screw driver to unclip the fender cover – Lifting steel hook over the plastic catch(See top right and bottom left image)11. Undo the two self-taping screws12. Pull the black plastic mounting plate off of the fender.

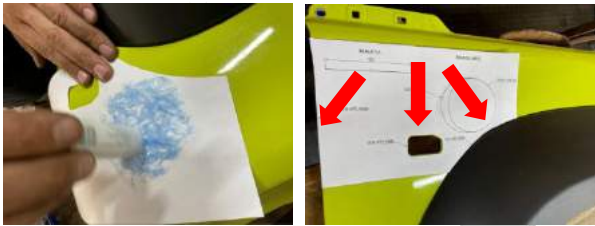
JIMNY GEN4 SNORKEL FITMENT

	<ol style="list-style-type: none">13. Loosen the side sill – Two small body clips and three large body clips14. Pull the Side sill down and out, exposing the two nuts M6 bolts – Remove these two bolts
	<ol style="list-style-type: none">15. Remove all 14 x clips and 2 x self tapping screws holding the wheel well cover in place16. Use a Medium Phillips screw driver to remove wheel well cover bolt from the bumper17. Remove the wheel well cover by sliding it towards the engine bay till it is free from the fender.
	<ol style="list-style-type: none">18. You now have access to the indicator, disconnect the plug to the indicator - push down on the retaining clip.19. Remove the indicator by pressing the large clip inwards.20. Remove the 3 x top fender bolts and 1 behind the bumper21. Remove the fender bolt just under the front bumper
	<ol style="list-style-type: none">22. Pull the fender towards you, protecting the fender paint by using your hand as a buffer.23. Slide the fender out and towards the rear of the vehicle – The bumper clip holds the fender.24. Remove the Vacuum chamber (3 x M6 Bolts inside the engine bay)

JIMNY GEN4 SNORKEL FITMENT



25. Mount the vacuum chamber to the relocation bracket using the existing M6 nuts
26. Then mount the vacuum chamber bracket to the fender well- fasten with the 3 x M6 washers and M6 Nylock nuts
27. Loosely mount the Snorkel Main Body Mount – Note the Single Bolt Retainer Plate and Double Bolt Retainer Plate must be mounted on the outside with the 3 x M6 Nylock and M6 Washers on the inside of the engine bay



28. Cut out the template (Make sure it is printed to scale 1:1 and check on the scale provided)
29. Use a paper glue stick, apply the glue around the hole to be cut as well as outside of the border to ensure the paper does not tear.
30. Line up to the indicator hole, rear of the fender and the fender flair



31. Hole saw first using the centre point provided
32. Dremel the oval portion out carefully, ensuring the job is kept neat.
33. Remove the paper and use a rag with water to remove the glue and left behind paper
34. Use a file or de-burring tool to remove the bur on the inside and outside of the hole.



35. Treat all the bare metal with a rust inhibitor paint
36. Fit the rubber trim supplied – Note the seam must face towards the rear of the fender.

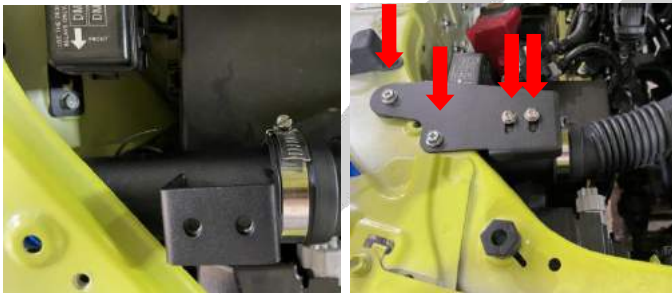
JIMNY GEN4 SNORKEL FITMENT



37. Tape up the inside of the “A” Pillar to protect the paint during the fitment
38. Tape up the Top front of the side view mirror to protect the paint during the fitment.



39. Remove the 2 x M6 bolts, and remove the mounting plate from the inlet pipe.
40. Clamp the blue flexi pipe on to the “T” piece – Ensure the clamp bolt head is facing “down” in the same direction as the one-way valve.
41. Clamp the one-way valve to the “T” piece – ensure that the slit is perpendicular to the “T” piece and the bolt head is facing up



42. Insert the blue flexible pipe through the engine bay hole feeding it to the fender area.
43. Bolt the new inlet onto the existing mounting plate holes.
44. Bolt the 2 x M6x10 button head with 2 x M6 spring washers and 2x M6 Washers.



45. Insert the Snorkel front portion through the fender.
46. Rest the snorkel on the taped side view mirror
47. Reinsert the 3 x M6 top bolts and the black plastic fender cover mounting plate



48. Locate the “A” Pillar mounting plate between the door and the “A” Pillar.
49. Fasten the rest of the 3 x M6 Bolts fender mounting bolts
50. Nip up the Snorkel Main Body Mount
51. Hold the snorkel in place and open the door fully, checking for clearance and ensuring the snorkel is lined up correctly

JIMNY GEN4 SNORKEL FITMENT



52. Drill with a \varnothing 5mm drill bit, one of the "A" Pillar mounting holes with the bracket in place – Drill slowly to avoid going straight through and damaging the "A" Pillar
53. Insert the rivet to locate it and drill the next hole



54. Remove the masking tape
55. Dip back end of the rivet into the Rust inhibitor and insert it into the bracket – this ensures that the inside and outside drilled hole will be treated – repeat this process.



56. Fasten the Snorkel Main Body Mount and "U" bracket.
57. Slide the hose clamp onto the flexible hose and inset the hose over the Snorkel Main Body.
58. Fasten the hose clamp.
59. Re fit Wheel well cover.
60. Remove remaining masking tape and work your way backwards from step 19. To re-assemble the vehicle.