

CONGRATULATIONS ON THE PURCHASE OF YOUR DES SOL PRODUCT.

Part Number : DSFR-TBL-MNT
Part Description : Des Sol FR-Table-Mount
Vehicle : All types

WARNING

NOTE THE FOLLOWING:

- THIS PRODUCT MUST BE INSTALLED EXACTLY AS PER THE FITTING INSTRUCTIONS BELOW AND ONLY THE HARDWARE SUPPLIED WITH THIS PACK IS TO BE USED
- IN THE EVENT OF DAMAGE TO THE KIT, CONTACT YOUR NEAREST DES SOL SUPPLIER – REPAIRS OR MODIFICATIONS MUST NOT BE ATTEMPTED TO THIS PRODUCT
- THIS PRODUCT AND MOUNTING COMPONENTS MUST NOT BE MODIFIED IN ANY WAY
- DO NOT REMOVE LABELS FROM THIS PRODUCT
- ALWAYS ENSURE THAT THE CLIP IS LOCKED IN PLACE BEFORE DRIVING OFF

Tools required for installation:

- Ratchet & Sockets:
 - 8mm socket (8mm spanner will also work) You will need two of them
- Allan keys
 - 5mm Allan key
 - 3mm Allan key

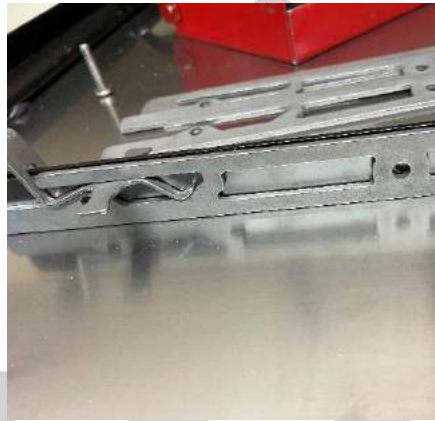
ITEMS CONTAINED IN THIS KIT

Mounting Brackets	4 x Mounting Brackets 1 x Mounting End Stop with Foam gasket
Table Mount Latch	1 x Main Latch 1 x Latching Plate 2 x Latching Springs
Table Leg Catch	2 x Branded Outer Plates 4 x Skeleton Guide Plates 2 x Slide Catches
Nuts And Bolts	10 x M8x16 SS Button Head Cap Screws 10 x M8 SS Washers 10 x M8 Nyloc Nuts (Zink plated) 3 x M5x25 SS Button Head Cap Screws 3 x M5 SS Washers 3 x M5 Nyloc Nuts (Zink plated)

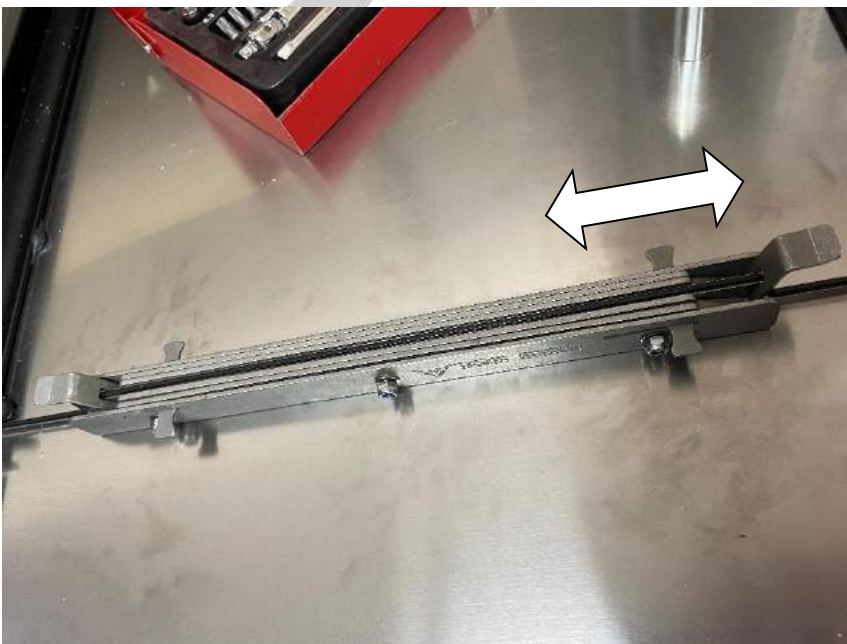
PREPARING THE TABLE



1. Remove the existing M5 Nuts
2. Lay out your Branded Outer Plates, Skeleton Guide Plates and Slide Catches

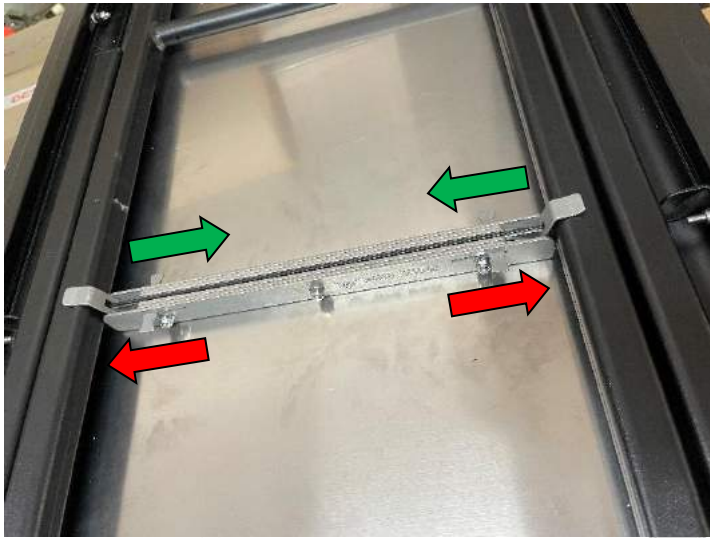


3. Place the Slide catch plates on the table, over the table top bend ridge
4. Place 2 of the Skeleton Plates on each side of the ridge. Make sure the centre hole of the table lines up with the centre hole of the Skeleton Plates - You will have to guide these plates over the legs of the Slide Catch plates and make sure they are in the correct position.

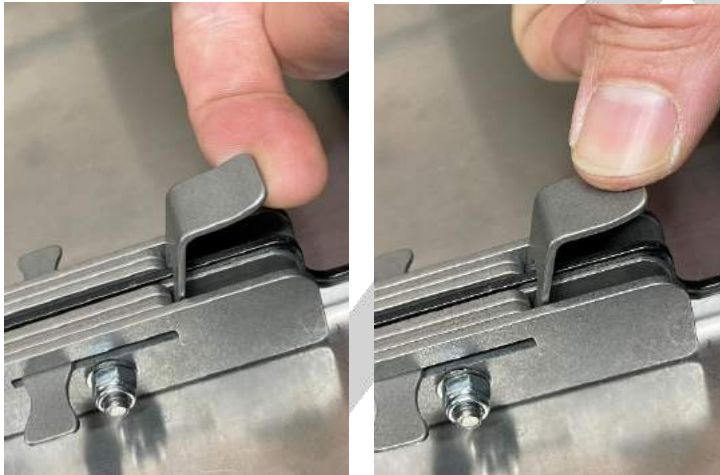


5. Insert the Branded outer plates and insert the new M5x25 Button Head Cap Screws through the plate
6. Place the M5 washer over the thread and then insert the M5 Nyloc Nuts.
7. Tighten these nuts while making sure the Slide Catches moves smoothly.

PREPARING THE TABLE



8. Fold Down the legs of the table, ensuring that the Slide Catches are in their “open position” shown by the green arrows
9. Once the table legs are down, check that the Slides Catches move smoothly over the table legs – You might have to push the table leg down when sliding the catch over. This will help with reducing the chance of the leg rattling.



10. If the Slide catch is too loose, pull the Slide Catch to its most backward position, lift up the table leg and gently pull up on the portion of the Slide Catch that secures the table leg.
11. If the Slide catch is too loose, push the Slide Catch to its most backward position, lift up the table leg and gently push down on the portion of the Slide Catch that secures the table leg.
12. Repeat 10 and 11 till you are happy with Slide Catch.

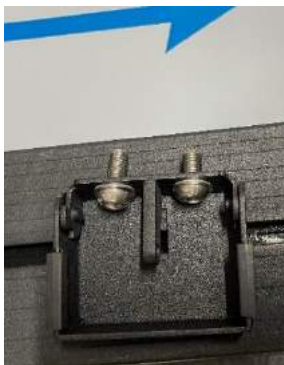
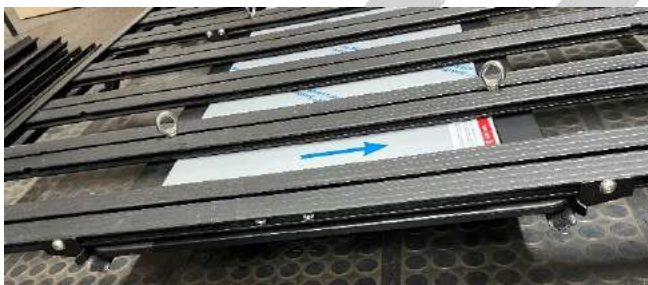
TABLE BRACKET ROOF RACK MOUNTS



13. Using 2 x M8x16 Button Head Cap Screws with washers, place the Mounting End Stop (shown in red) in the centre of the 2nd slat from the front. This must hang between the roof and the roof rack.
14. Mount the two mounts loosely on the 4th rail from the front shown in green using 2 x M8x16 Button head cap screws. These bolts must be tightened up so that there is only a small gap between the slat and the mount, this will allow it to be easily moved on the rail for alignment.
(NOTE: Previous models used 4 x M8x16 Button Head Cap screws)



15. Insert two nuts to the last slat in the side slots. These will be used later to mount the Main Latch
16. Place the last two brackets on the last slat and follow step 14.
17. Slide the table in place and centralize the table to the roof racks
18. Slide the brackets up against the table and then move each bracket away between 3-5mm. This gap will help with sliding the table in and out of the rack.
19. Once you are happy, you can tighten up the button head cap screws to 20Nm



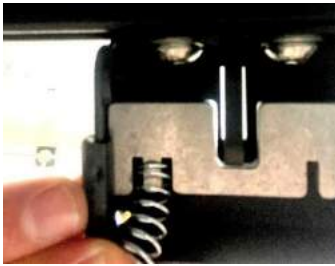
20. Insert the two M8x16 button head cap screws with washer in to the Main Latch
21. With the flat side of the latch facing up and holding the Main Latch open, insert the two button head cap screws in to the nuts that were inserted in step 15
22. Once you have centralized the centre of the slot with the centre of the slat, tighten these up to 20 Nm

TABLE BRACKET ROOF RACK MOUNTS



23. Take the Latch plate and with the two spring perches facing down, insert the Latch plate into the Main Latch

NOTE: It is easier to insert this plate if you hold the Main Latch open as per step 21

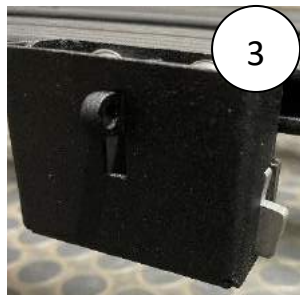
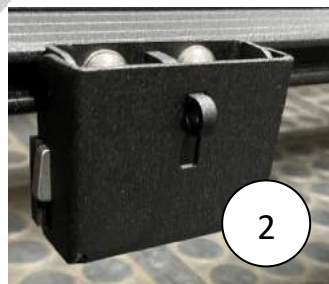
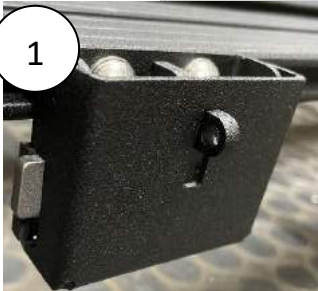


24. With the Main Latch still held open and the Latch plate pushed forward towards the roof rack, slide the Latch spring over the spring perch, compressing the spring to get it over the bottom lip of the Main Latch

25. When opening and closing the latch for the first few times, you may have to push on the table a bit. After a short while, the rubber gasket on the Mounting End Stop will take form and this will no longer be a problem.

26. You are now ready to slide the table in place, close the latch and go on an adventure.

WARNING



- Always make sure that the latch has locked into place correctly as per image 1.
- If the latch has been locked incorrectly as seen in image 2 and 3, you run the risk if the Latch not locking properly and allowing the table to slide out – this can be prevented if a lock is always used