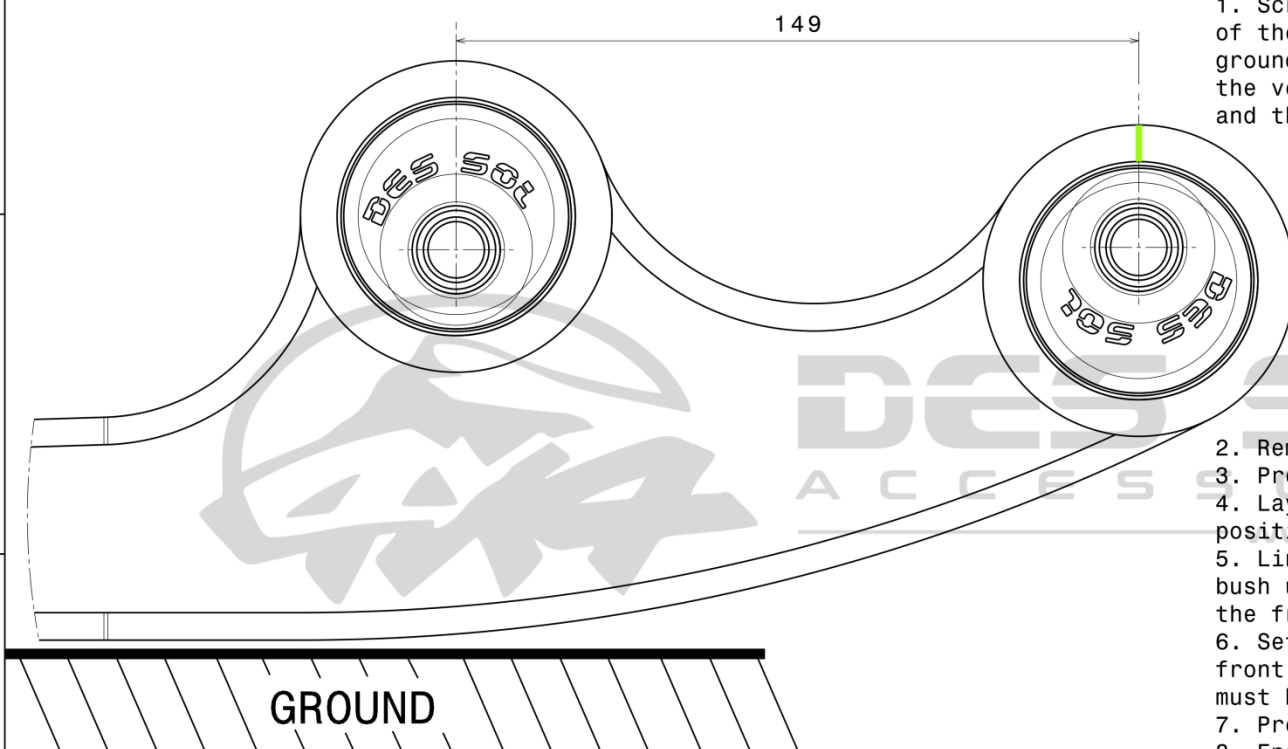


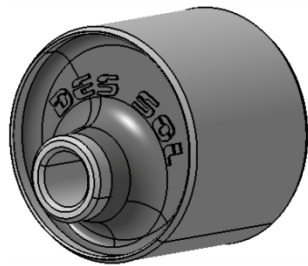
SUZUKI JIMNY 2008/CURRENT 2° Caster correction for 50mm

FITMENT FOR FRONT RADIAL ARMS



1. Scribe a vertical line in the centre of the front bush, perpendicular to the ground, this should be done before raising the vehicle (alternatively use a square and the flat ground as per image)

2. Remove the arms from the vehicle
3. Press out the old bushes with a mandrel
4. Lay the radial arm on this template to position the holes
5. Line the top dead centre of the front bush up with the scribed line and press the front bush in
6. Set the rear bush 180° opposite to the front bush. NOTE: the centres of the bushes must be 149mm
7. Press the rear bush in
8. Ensure the bushes in both arms are identical (overlay the arms to check)
9. Re-install the arms and perform wheel alignment



TOLERANCE $\pm 0.5\text{mm}$

This drawing is our property. It can't be reproduced or communicated without our written agreement.



DRAWING TITLE

DSJ-Suspension

DRAWN BY
L. GODFREY

DATE

CHECKED BY

DATE

SIZE A3 DRAWING NUMBER DSJCCB08-2deg-Assembly REV 0

DESIGNED BY

DATE

SCALE 1:1 WEIGHT (kg) XXX SHEET 1/1